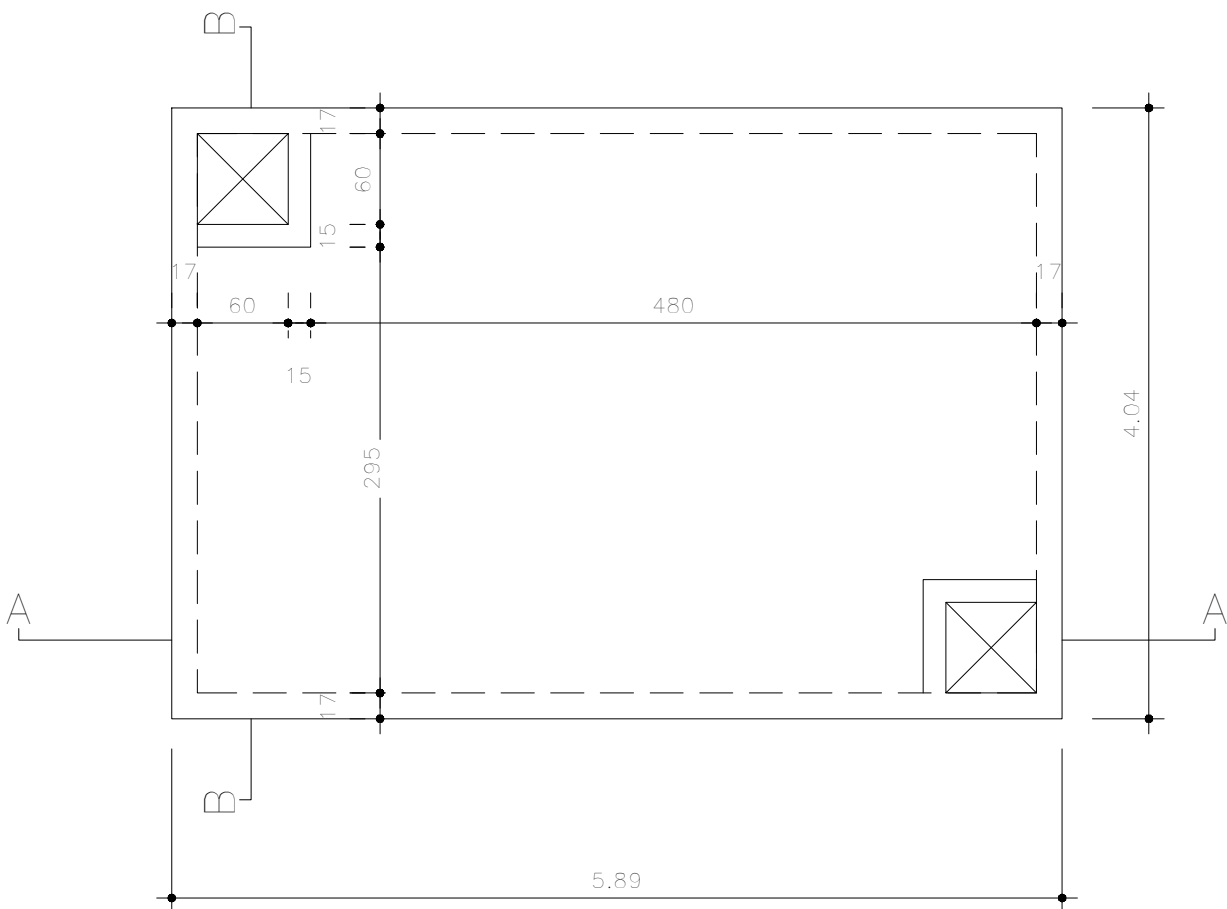


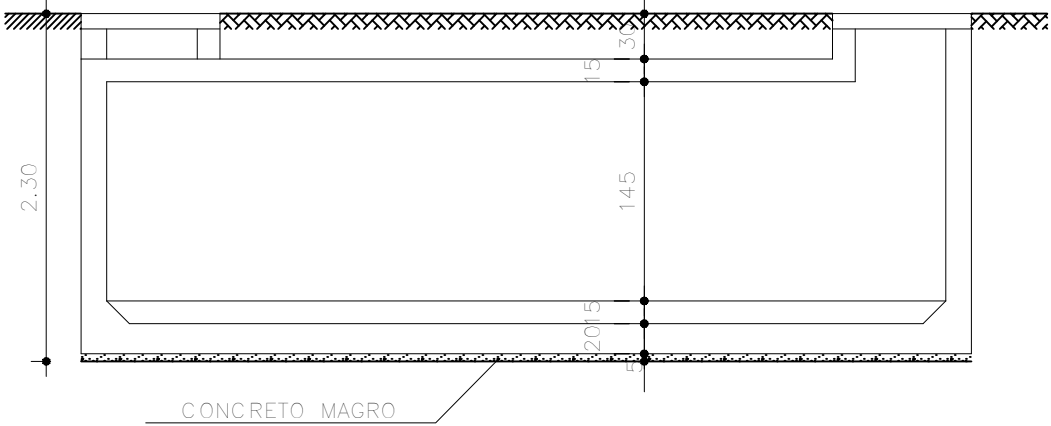
FORMA DA LAJE DA TAMPA

ESC: 1/50



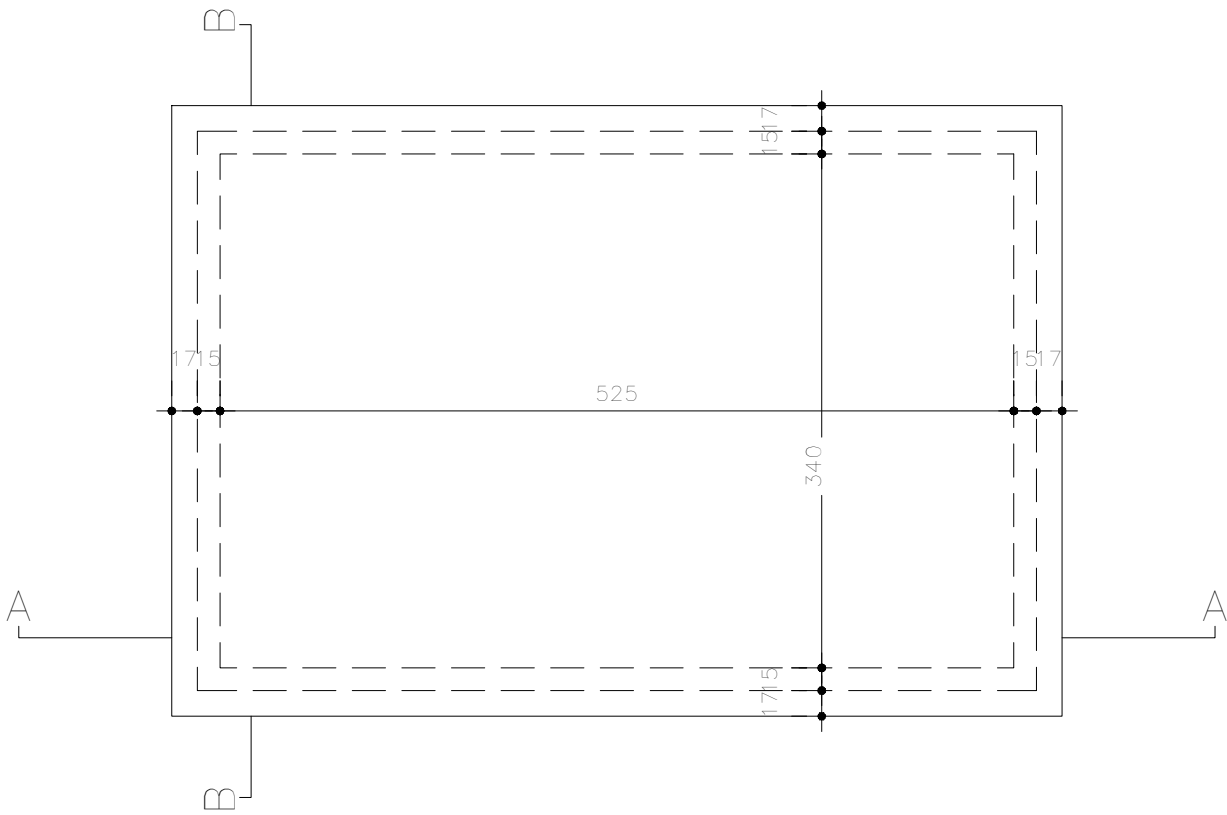
CORTE A-A

ESC: 1/50



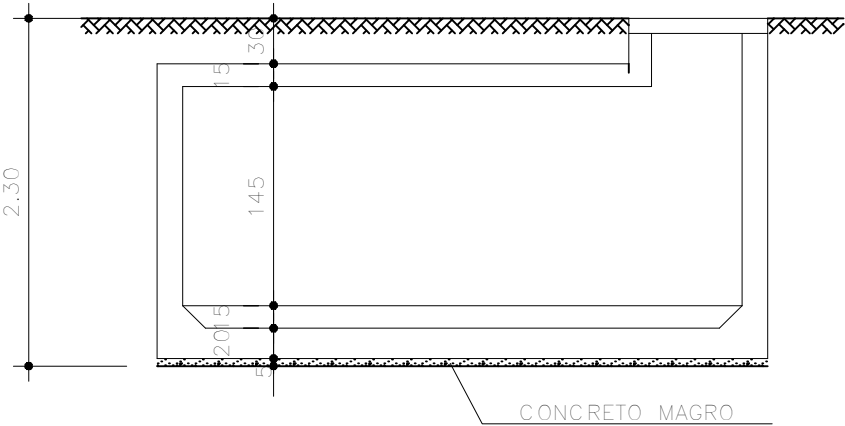
FORMA DA LAJE DO FUNDO

ESC: 1/50

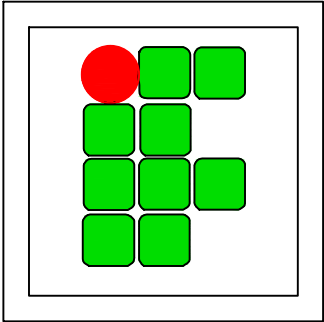


CORTE B-B

ESC: 1/50



Nº	ALTERAÇÃO/REVISÕES	REVISADO POR	DATA



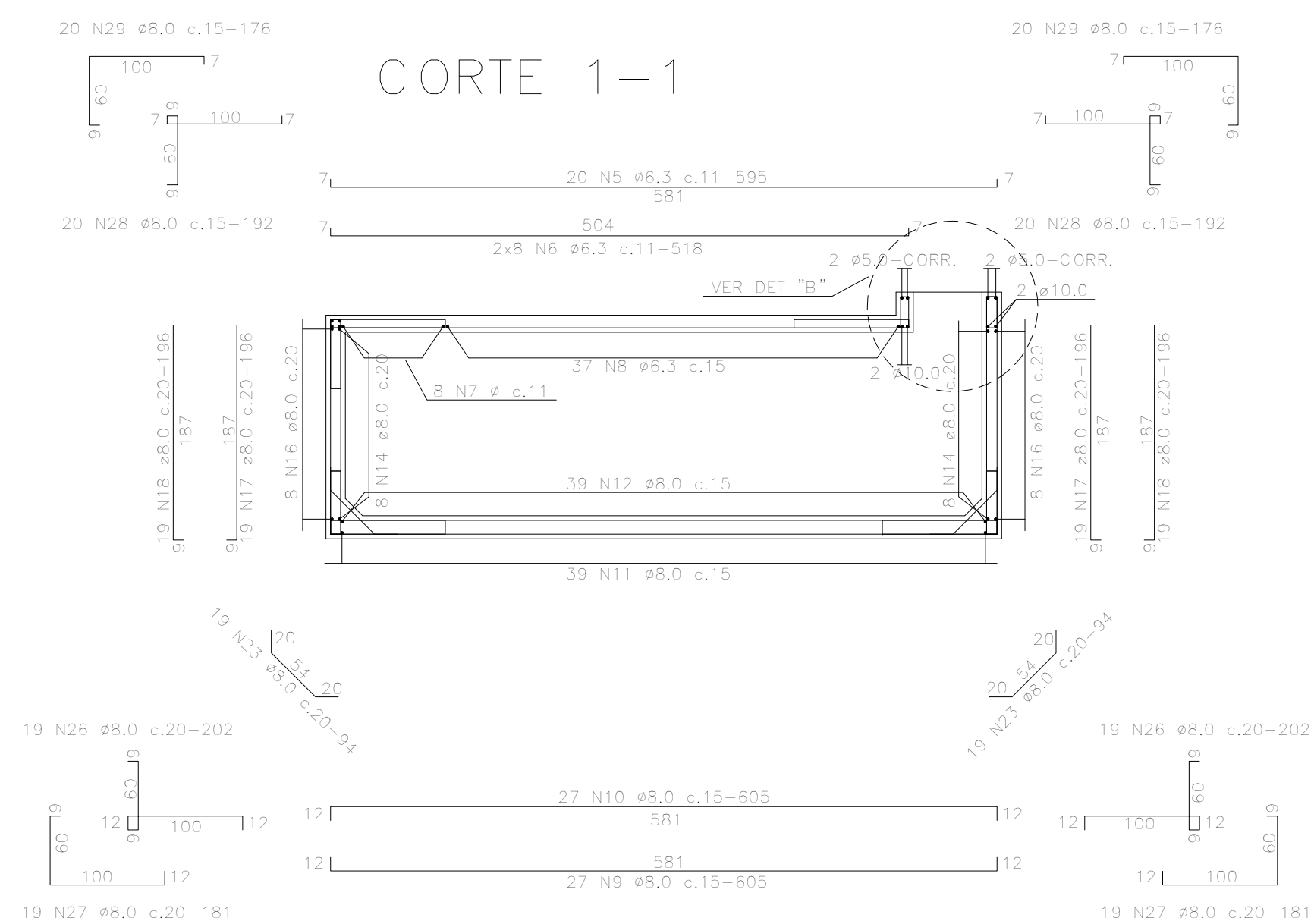
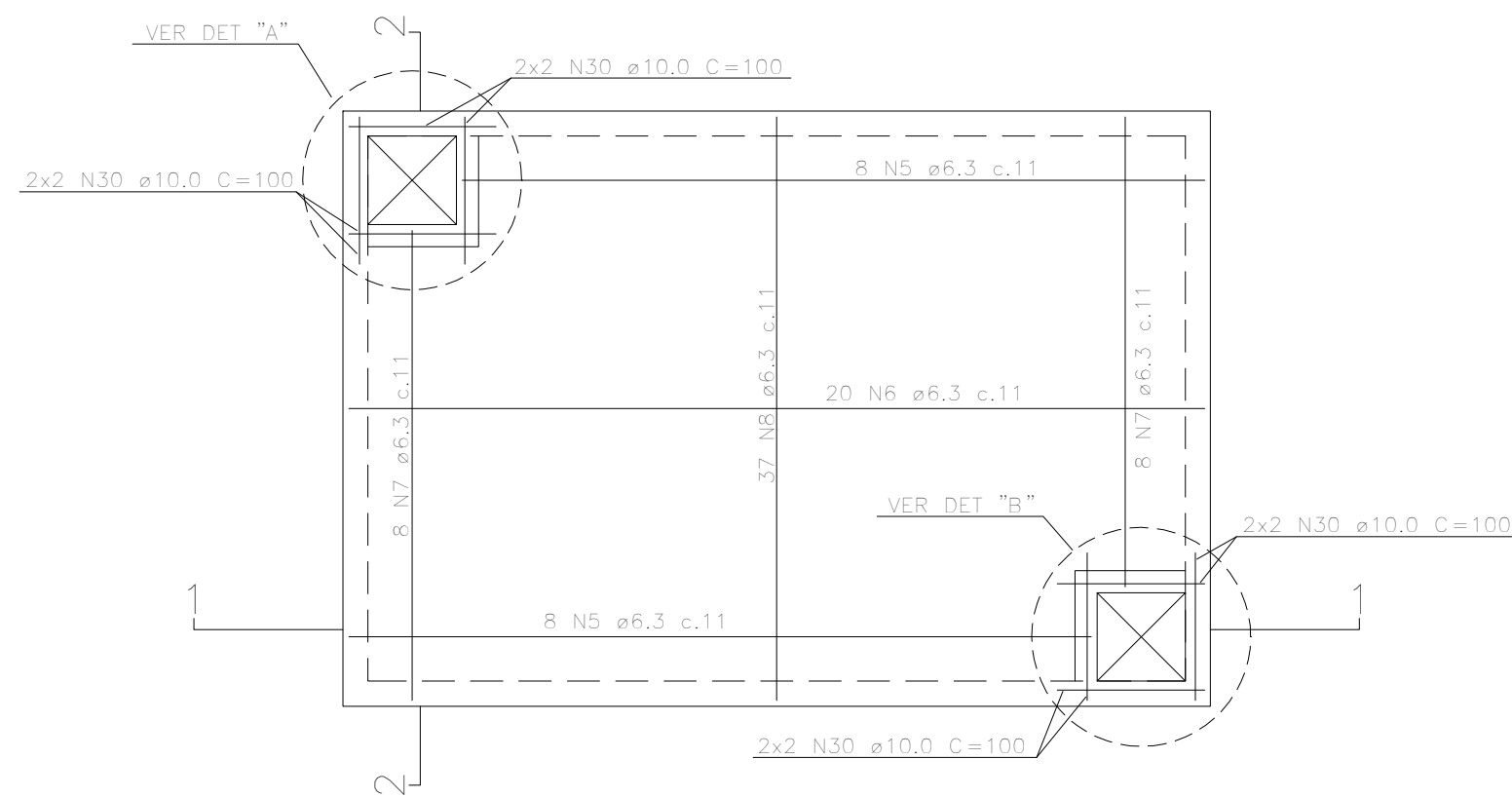
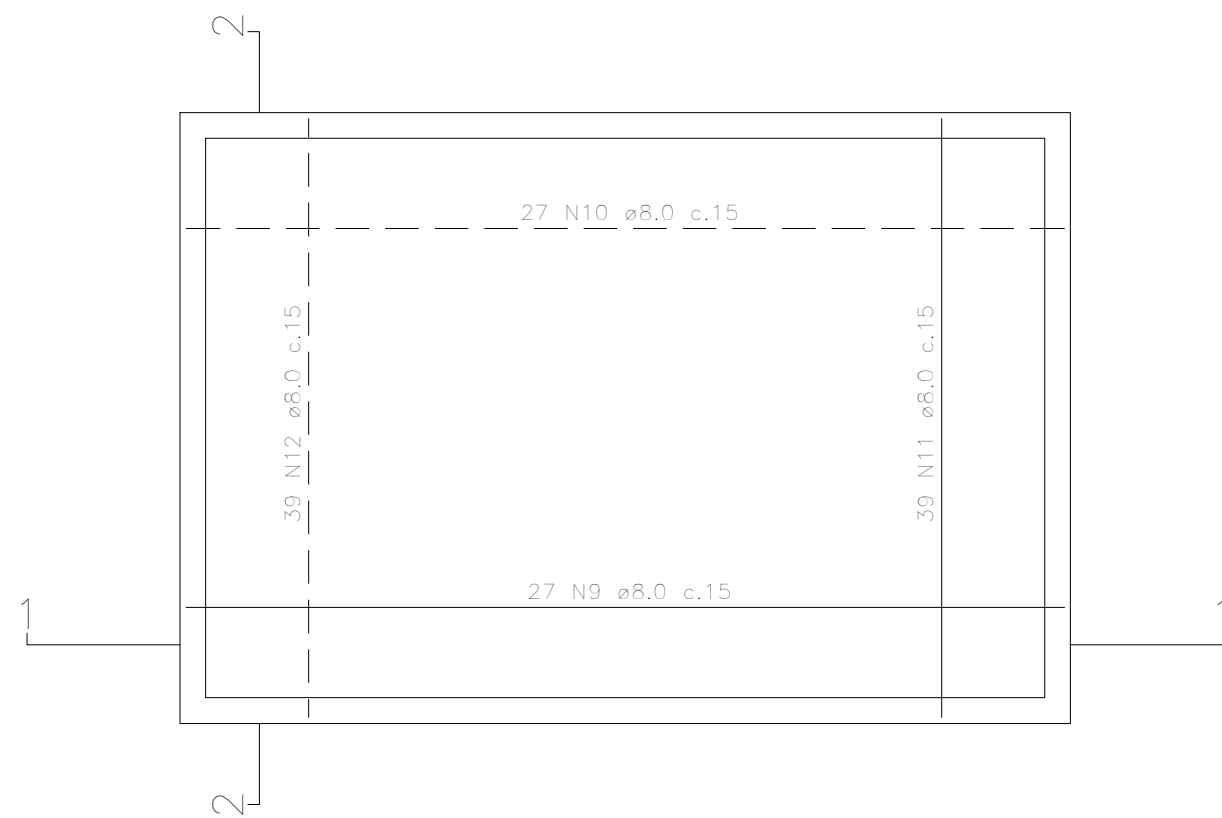
AUTOR DO PROJETO:  
Engº Frederico Damasceno Pinheiro  
CREA 270082778-3

ENDEREÇO:  
Av. Eng. Gentil Tavares da Motta, 1166 - Getúlio Vargas - Aracaju/SE  
deop@ifs.edu.br  
TEL: (79)3711-3139



CAMPUS JAPARATUBA/SE  
ESTRUTURAL RESERVATÓRIO ENTERRADO

CLIENTE:	INSTITUTO FEDERAL DE SERGIPE - CAMPUS JAPARATUBA		
DESENHO:	ESTRUTURAL - RESERVATÓRIO ENTERRADO FORMAS E CORTES	ESCALA:	1:50
ARQUIVO:		DATA:	NOV/2024
		FOLHA:	01/02



## ARMAÇÃO DAS PAREDES

8 N20 ø8,0 c.20-188

100 19

9 70 9

100 9

9 70 9

8 N19 ø8,0 c.20-206

28 N18 ø8,0 c.20

28 N17 ø8,0 c.20

19 N18 ø8,0 c.20

19 N17 ø8,0 c.20

19 N16 ø8,0 c.20-414

396 9

8 N14 ø8,0 c.20-414

9 70 9

100 9

8 N20 ø8,0 c.20-188

8 N19 ø8,0 c.20-206

8 N18 ø8,0 c.20-188

8 N17 ø8,0 c.20-188

8 N16 ø8,0 c.20-188

8 N15 ø8,0 c.20-188

8 N14 ø8,0 c.20-188

8 N13 ø8,0 c.20-188

8 N12 ø8,0 c.20-188

8 N11 ø8,0 c.20-188

8 N10 ø8,0 c.20-188

8 N9 ø8,0 c.20-188

8 N8 ø8,0 c.20-188

8 N7 ø8,0 c.20-188

8 N6 ø8,0 c.20-188

8 N5 ø8,0 c.20-188

8 N4 ø8,0 c.20-188

8 N3 ø8,0 c.20-188

8 N2 ø8,0 c.20-188

8 N1 ø8,0 c.20-188

8 N0 ø8,0 c.20-188

8 N-1 ø8,0 c.20-188

8 N-2 ø8,0 c.20-188

8 N-3 ø8,0 c.20-188

8 N-4 ø8,0 c.20-188

8 N-5 ø8,0 c.20-188

8 N-6 ø8,0 c.20-188

8 N-7 ø8,0 c.20-188

8 N-8 ø8,0 c.20-188

8 N-9 ø8,0 c.20-188

8 N-10 ø8,0 c.20-188

8 N-11 ø8,0 c.20-188

8 N-12 ø8,0 c.20-188

8 N-13 ø8,0 c.20-188

8 N-14 ø8,0 c.20-188

8 N-15 ø8,0 c.20-188

8 N-16 ø8,0 c.20-188

8 N-17 ø8,0 c.20-188

8 N-18 ø8,0 c.20-188

8 N-19 ø8,0 c.20-188

8 N-20 ø8,0 c.20-188

8 N-21 ø8,0 c.20-188

8 N-22 ø8,0 c.20-188

8 N-23 ø8,0 c.20-188

8 N-24 ø8,0 c.20-188

8 N-25 ø8,0 c.20-188

8 N-26 ø8,0 c.20-188

8 N-27 ø8,0 c.20-188

8 N-28 ø8,0 c.20-188

8 N-29 ø8,0 c.20-188

8 N-30 ø8,0 c.20-188

8 N-31 ø8,0 c.20-188

8 N-32 ø8,0 c.20-188

8 N-33 ø8,0 c.20-188

8 N-34 ø8,0 c.20-188

8 N-35 ø8,0 c.20-188

8 N-36 ø8,0 c.20-188

8 N-37 ø8,0 c.20-188

8 N-38 ø8,0 c.20-188

8 N-39 ø8,0 c.20-188

8 N-40 ø8,0 c.20-188

8 N-41 ø8,0 c.20-188

8 N-42 ø8,0 c.20-188

8 N-43 ø8,0 c.20-188

8 N-44 ø8,0 c.20-188

8 N-45 ø8,0 c.20-188

8 N-46 ø8,0 c.20-188

8 N-47 ø8,0 c.20-188

8 N-48 ø8,0 c.20-188

8 N-49 ø8,0 c.20-188

8 N-50 ø8,0 c.20-188

8 N-51 ø8,0 c.20-188

8 N-52 ø8,0 c.20-188

8 N-53 ø8,0 c.20-188

8 N-54 ø8,0 c.20-188

8 N-55 ø8,0 c.20-188

8 N-56 ø8,0 c.20-188

8 N-57 ø8,0 c.20-188

8 N-58 ø8,0 c.20-188

8 N-59 ø8,0 c.20-188

8 N-60 ø8,0 c.20-188

8 N-61 ø8,0 c.20-188

8 N-62 ø8,0 c.20-188

8 N-63 ø8,0 c.20-188

8 N-64 ø8,0 c.20-188

8 N-65 ø8,0 c.20-188

8 N-66 ø8,0 c.20-188

8 N-67 ø8,0 c.20-188

8 N-68 ø8,0 c.20-188

8 N-69 ø8,0 c.20-188

8 N-70 ø8,0 c.20-188

8 N-71 ø8,0 c.20-188

8 N-72 ø8,0 c.20-188

8 N-73 ø8,0 c.20-188

8 N-74 ø8,0 c.20-188

8 N-75 ø8,0 c.20-188

8 N-76 ø8,0 c.20-188

8 N-77 ø8,0 c.20-188

8 N-78 ø8,0 c.20-188

8 N-79 ø8,0 c.20-188

8 N-80 ø8,0 c.20-188

8 N-81 ø8,0 c.20-188

8 N-82 ø8,0 c.20-188

8 N-83 ø8,0 c.20-188

8 N-84 ø8,0 c.20-188

8 N-85 ø8,0 c.20-188

8 N-86 ø8,0 c.20-188

8 N-87 ø8,0 c.20-188

8 N-88 ø8,0 c.20-188

8 N-89 ø8,0 c.20-188

8 N-90 ø8,0 c.20-188

8 N-91 ø8,0 c.20-188

8 N-92 ø8,0 c.20-188

8 N-93 ø8,0 c.20-188

8 N-94 ø8,0 c.20-188

8 N-95 ø8,0 c.20-188

8 N-96 ø8,0 c.20-188

8 N-97 ø8,0 c.20-188

8 N-98 ø8,0 c.20-188

8 N-99 ø8,0 c.20-188

8 N-100 ø8,0 c.20-188

8 N-101 ø8,0 c.20-188

8 N-102 ø8,0 c.20-188

8 N-103 ø8,0 c.20-188

8 N-104 ø8,0 c.20-188

8 N-105 ø8,0 c.20-188

8 N-106 ø8,0 c.20-188

8 N-107 ø8,0 c.20-188

8 N-108 ø8,0 c.20-188

8 N-109 ø8,0 c.20-188

8 N-110 ø8,0 c.20-188

8 N-111 ø8,0 c.20-188

8 N-112 ø8,0 c.20-188

8 N-113 ø8,0 c.20-188

8 N-114 ø8,0 c.20-188

8 N-115 ø8,0 c.20-188

8 N-116 ø8,0 c.20-188

8 N-117 ø8,0 c.20-188

8 N-118 ø8,0 c.20-188

8 N-119 ø8,0 c.20-188

8 N-120 ø8,0 c.20-188

8 N-121 ø8,0 c.20-188

8 N-122 ø8,0 c.20-188

8 N-123 ø8,0 c.20-188

8 N-124 ø8,0 c.20-188

8 N-125 ø8,0 c.20-188

8 N-126 ø8,0 c.20-188

8 N-127 ø8,0 c.20-188

8 N-128 ø8,0 c.20-188

8 N-129 ø8,0 c.20-188

8 N-130 ø8,0 c.20-188

8 N-131 ø8,0 c.20-188

8 N-132 ø8,0 c.20-188

8 N-133 ø8,0 c.20-188

8 N-134 ø8,0 c.20-188

8 N-135 ø8,0 c.20-188

8 N-136 ø8,0 c.20-188

8 N-137 ø8,0 c.20-188

8 N-138 ø8,0 c.20-188

8 N-139 ø8,0 c.20-188

8 N-140 ø8,0 c.20-188

8 N-141 ø8,0 c.20-188

8 N-142 ø8,0 c.20-188

8 N-143 ø8,0 c.20-188

8 N-144 ø8,0 c.20-188

8 N-145 ø8,0 c.20-188

8 N-146 ø8,0 c.20-188

<[illegible]

ESCALA: 1/25

27

2x5 N1  $\phi 5.0$  c.15-80

60

2x5 N4  $\phi 6.3$  c.15-127

60

2 N3  $\phi 5.0$ -C-ORR. 2 N3  $\phi 5.0$ -C-ORR. 2 N3  $\phi 10.0$ -100

27

2x5 N2  $\phi 5.0$  c.15-80

ESCALA: 1/25

2 N3  $\phi$ 5,0 - CORR. 2 N3  $\phi$ 5,0 - CORR.

2 N30  $\phi$ 10,0 - 100

27

27

2 N30  $\phi$ 10,0 - 100

27

2x5 N2  $\phi$ 5,0 c.15-84

2x5 N1  $\phi$ 5,0 c.15-80

2x5 N4  $\phi$ 6,3 c.15-127

60

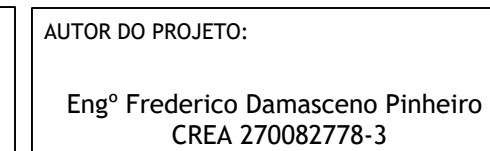
60

A <sub>g</sub> Q	N	DIAM	Q	UNIT (cm)	C TOTAL (cm)
60	1	5.0	20	80	1600
60	2	5.0	20	84	1680
50	3	6.3	20	174	1740
50	4	6.3	20	177	2544
50	5	6.3	16	518	8288
50	6	6.3	20	595	11900
50	7	6.3	16	535	5328
50	8	6.3	37	410	15170
50	9	8.0	27	605	16335
50	10	8.0	27	605	16335
50	11	8.0	39	420	16380
50	12	8.0	39	420	16380
50	13	8.0	16	593	9584
50	14	8.0	16	414	6624
50	15	8.0	16	593	9584
50	16	8.0	16	414	6624
50	17	8.0	112	196	21952
50	18	8.0	112	196	21952
50	19	8.0	32	206	6528
50	20	8.0	32	188	6016
50	21	8.0	56	172	9632
50	22	8.0	15	151	8456
50	23	8.0	94	94	8836
50	24	8.0	64	162	10368
50	25	8.0	64	146	9344
50	26	8.0	38	202	7676
50	27	8.0	38	181	6878
50	28	8.0	40	192	7680
50	29	8.0	40	176	7040
50	30	8.0	40	180	7200

AÇO	DIAM	C.TOTAL (m)	PESO+10% (kg)
CA60	5,0	47,52	8,36
CA50	6,3	432,26	118,67
	8,0	2302,68	987,86
	10,0	16,00	10,91
PESO TOTAL			
CA50	1117,64		
CA60	8,36		

Volume de concreto 13.0Mpa = 1.46m<sup>3</sup>  
 Volume de concreto 30.0Mpa total = 13.91 m<sup>3</sup>  
 Área de forma total = 100.71 m<sup>2</sup>

Nº	ALTERAÇÃO/REVISÕES	REVISADO POR	DATA



**ENDEREÇO:**  
Av. Eng. Gentil Tavares da Motta, 1166 - Getúlio Vargas - Aracaju/SE  
deop@ifs.edu.br TEL: (79)3711-3139

## ESTRUTURAL RESERVATÓRIO ENTERRADO

CLIENTE: INSTITUTO FEDERAL DE SERGIPE - CAMPUS JAPARATUBA

DESENHO:  
ESTRUTURAL - RESERVATÓRIO ENTERRADO  
ARMAÇÕES - DETALHES

ARQUIVO: Código ISBN CÓDIGO NACIONAL PAÍS SERIES Sequel / Anticipo Reserva

J A P R E S E S T P E 0 0 2 0 0 2 R 0 0

ESCALA: 1:50

DATA:  
NOV/2024

FOLHA: 02/02